

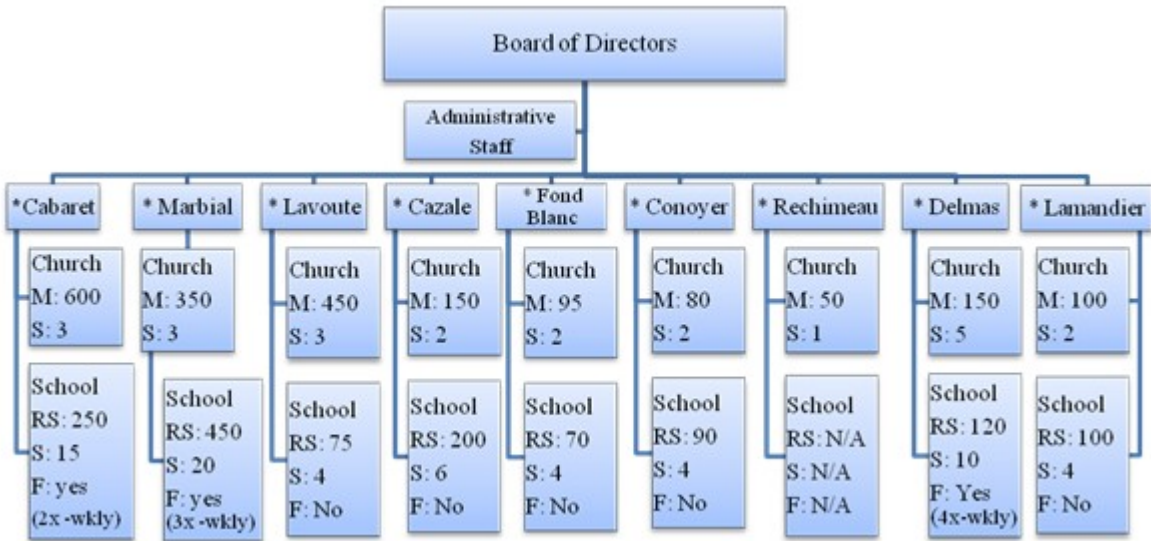
OEUVRE EVANGELIQUE BAPTISTE BETHESDA (OEBB) DISASTER RELIEF & REBUILDING PLANNING

OEBB SUMMARY

The Oeuvre Evangelique Baptist Bethesda or Bethesda Evangelical Baptist Mission (thereafter OEBB). The OEBB has been in existence since 1969 and formally licensed by the Haitian government in 1986. OEBB has had the privilege to minister to several communities by being involved in the following: church planting, formal and non-formal education, health care, reforestation, sanitation, small business loans, boys and girls orphanage and spiritual care. The mission of the OEBB has been to focus on spreading the gospel message, helping believers to grow in the likeness of Christ, strengthen the whole person so that they will become productive citizens.

In response to the January 12th earthquake, the OEBB is distributing food and water in the following six sites: Delmas 77 – Rue Praslin (tent city), Delmas 75 (adjacent to tent city), Delmas 33 –AFCA (Association des Femmes Chretiennes en Action –compound and tent city), Cabaret, Cazale, Fond-Blanc, Conoyer, Rechimeau, Marbial-Jacmel, Lavoute and Lamandier. Thus far, OEBB has distributed food and water to approximately 150 – 200 people per site per distribution and will continue to distribute as resources permit. OEBB provides ongoing medical care for the communities stated above thus far through the following: a 15 person US/Canada medical team for five days, four nurses and one paramedic provide ongoing care during the months of February. OEBB divides disaster relief into three categories: phase one- emergency relief; phase two –stabilization; phase three: long-term rebuilding.

OEBB MISSION ORGANIZATION



(M) = Membership, (RS) = Registered Students, (S) = Staff, (F) = Food Program, () = Emergency Relief site*

OEBB Disaster Services

Services involve providing personnel, equipment, and supplies. The following list provides ways volunteers can become involved:

Bulk Items – Collecting, sorting, storing, and distributing such necessities as food, clothing, household goods, personal items, and building materials.

Casework – Assisting individuals and/or families regarding disaster food distribution services available to them and minimally tracking their recovery.

Communication – Equipment and qualified personnel who provide communication capabilities during disasters and disaster relief responses.

Pastoral / Counseling /Crisis Intervention – Church leaders have volunteered to provide crisis intervention and care for individuals throughout the disaster cycle.

Damage Assessment – The preliminary assessment of the disaster including extent of damage, number of homes affected, and so on.

Emergency Medical – Qualified medical personnel (nurses, paramedics, emergency medical technicians, etc.) with equipment and supplies. These individuals often work with other types of units.

Food Distribution – Feeding may be from a mobile unit or a fixed location such as a church or school.

Interpreters – Translating or interpreting for those who do not understand or speak English in regard to disaster assistance.

Reconstruction – Rebuilding and making permanent repairs to churches, homes, and other buildings affected by disaster.

Repair Team – Volunteer teams supplying emergency repairs to provide protection against further damage.

Sanitation – Build latrines.

Shelter Care – Managing emergency tent shelters for displaced earthquake victims. Shelter care may take place in churches, schools, or other facilities used for the purpose of providing safety and security for those affected by disaster or for the volunteer workers.

Transportation – Carrying team members, passengers or hauling goods. This may be accomplished using mission vehicles.

Water Purification – Setting up water purification units and developing a large capacity for water storage.

Phase One: Emergency Relief

Emergency relief is the immediate response to the disaster which began within the first week and lasts up to three months. The relief includes the following: food and water, shelter, emergency medical care, communication, and transportation. OEBC's campuses continue to serve as feeding sites with the help of its international partners (ex. Emmanuel International).

| Phase 1 (Feb, March, April) | Relief Activity | Current Need |
|--|------------------------|---|
| Housing | Tents | Tents |
| | Tarps | Tarps |
| | Sanitation | Sanitation Civil Engineer & Architect evaluation & construction plan Cazale temp. school structure (labor & supplies) |
| Food & Water | Food distribution | Food School Meals |
| | Food Dist. Project Co. | Project Coordinator Staff |
| | Water distribution | Water Tanks |
| Education | | Funds to cover budgetary short-fall to parents inability to cover tuition |
| Medical | | Medical supplies |

Ongoing clinical nursing support

| | | |
|-----------------------|---|--|
| Communication | Reliable Internet Service & Mobile phones <i>(no or unreliable land lines)</i> | Mobile Phones Internet |
| Transportation | (4x4) Mission vehicle & chartered truck | Motorcycle 250 Yamaha Driver's fees Funds for fuel vehicle & truck |
| Energy | Generators 1 Inverter system | Funds to purchase diesel fuel Funds to purchase 2 inverters w/ solar panels & batteries |
| Administration | | Supply, Travel and Personnel |

Phase Two: Stabilization

This stage may cover a period of a few weeks to six months. It is marked by providing basic services such as —temporary housing, food, water purification and ongoing medical care. OEBC will assist people who are in the process of putting their lives back in some order. Stabilization will include a continuation of the services listed under emergency relief with less urgency and refocus efforts to reconstruction. The stabilization stage will focus on reconstruction planning, repairs and short-term financial assistance.

Phase 2

Relief Activity

Current Need

**(May, June, July,
August, Sept,
October)**

| | | |
|-------------------------|--|--|
| Housing | Tents | Tents |
| | Tarps | Tarps |
| Food & Water | School Food distribution | School Meals |
| | Water distribution | Water |
| Education | | Funds to cover budgetary short-fall to parents inability to cover tuition |
| | | Medical supplies (rehabilitation) |
| Medical | | Ongoing clinical nursing support |
| | | |
| Communication | Reliable Internet Service & Mobile phones <i>(no or unreliable land lines)</i> | Mobile Phones |
| | | |
| Transportation | (4x4) Mission vehicle & chartered truck | Vehicle maintenance Driver's fees |
| | | |

Energy

Generators

Diesel fuel

Administration

Supply, Travel and Personnel

Phase Three: Long-term Rebuild & Reconstruction

Long-term rebuild usually takes four months to two years or longer. It is our aim to help individuals move from despair to confidence and determination. Long-term rebuilding depends on emotional as well as physical support. Permanent assistance consists of financial grants or loans, reconstruction or major repairs, job creation, crisis intervention. During the reconstruction phase the victims finally realize they will be solving many of their problems themselves. Restoration begins to reaffirm their beliefs. Healthy growth occurs. This phase extends for six months and beyond and corresponds with the long-term rebuild stage.

Phase 3**(November 2010 –
November 2011)****Relief Activity****Current Need**

School

After professional evaluation

Housing

Church

After professional evaluation

Community Housing

After professional evaluation

School Food distribution

School Meals

Food & Water

Water distribution

Water

Education Funds to cover budgetary short-fall to parents inability to cover tuition

Medical Medical supplies (rehabilitation)
Ongoing clinical nursing support

Communication Reliable Internet Service & Mobile phones
(no or unreliable land lines) Mobile Phones
Internet

Transportation (4x4) Mission vehicle & chartered truck
Vehicle maint. (including truck repairs)
Driver's fees
Fuel for vehicle & truck

Energy Generators Diesel fuel

Administration Supply, Travel and Personnel